

Hollow Shaft Ball Screw

N Series

- Standardized hollow shaft ball screw
- Forced cooling of the ball screw is possible
- Maximum screw shaft length up to 3000 mm



Hollow shaft ball screw

Available screw shaft outer diameters:
 $\phi 20$, $\phi 25$, $\phi 32$

■ Lineup

Caged Ball Type

SBN-V, SDA-V, SDAN-V

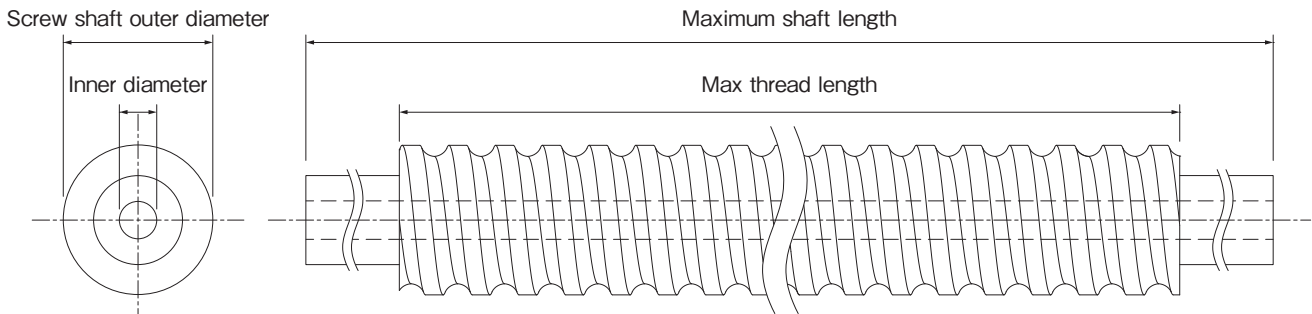
Full-Ball Type

SDA-VZ, SDAN-VX
BIF-V, BNFN-V, BNF-V, EBB-V, EPB-V

■ Lead Accuracy

C3, C5, C7

■ Dimensions

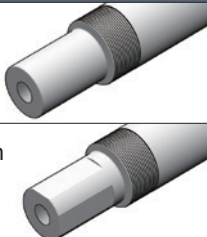
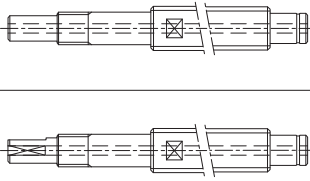
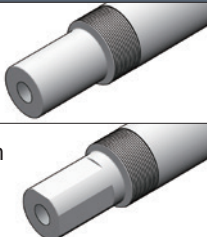
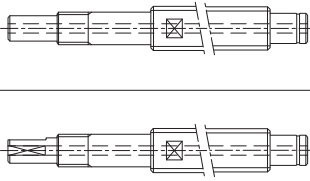


Unit: mm

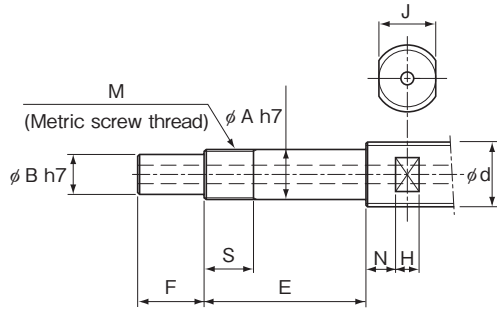
Screw shaft outer diameter	Inner diameter	Maximum shaft length	Max thread length
20	6	2000	1500
25	8	3000	2000
32	8	3000	2000

■ Shape and Dimensions of the Shaft Ends

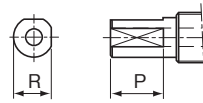
The Hollow Shaft Ball Screw N Series is available with the following shaft end shapes. Contact THK for other shaft end configurations, holes for fittings, or other types of additional machining.

		Shape		Symbol for shaft end shape	
				Fixed side	Supported side
Cut flat on two sides		Fixed side		Supported side	H1
					J1
Cut flat on two sides		Fixed side		Supported side	H3*
					J3*

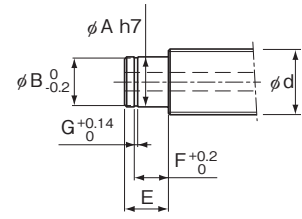
* H3 and J3 are only available for hollow shafts.



Shapes H1 and J1



Shapes H3 and J3



Shape K

Unit: mm

Fixed side shaft end shape	Screw shaft outer diameter d	Inner diameter	Bearing shaft outer diameter A	B	E	F	Metric screw thread		Width across flat				Shape H3 Cut flat on two sides		Shape J3 Cut flat on two sides	
							M	S	J	N	H	R	P	R	P	
H1	20	6	15	12	49	20	M15 × 1	13	16	6	9	11.3	16	-	-	
	25	8	15	12	49	20	M15 × 1	13	18	7	10	-	-	-	-	
	32	8	20	17	64	25	M20 × 1	17	27	9	13	16	21	-	-	
J1	20	6	15	12	40	20	M15 × 1	12	16	6	9	-	-	11.3	16	
	25	8	17	15	53	23	M17 × 1	17	18	7	10	-	-	14.3	21	
	32	8	20	17	53	25	M20 × 1	15	27	9	13	-	-	16	21	

Unit: mm

Supported side shaft end shape	Ball screw shaft outer diameter d	Bearing shaft outer diameter A	E	Snap ring groove		
				B	F	G
K	20	15	13	14.3	10.15	1.15
	25	15	13	14.3	10.15	1.15
		17	16	16.2	13.15	1.15
	32	20	19 (16)	19	15.35 (13.35)	1.35

■ Model Number Coding

SBN2510V-5 RR GO +1200L C5 N

└─ Hollow shaft ball screw

THK CO., LTD.

Headquarters 2-12-10 Shibaura, Minato-ku, Tokyo 108-8506 Japan

International Sales Department Phone: +81-3-5730-3860

www.thk.com